

BKK 2166

Grater Hand Blender

User Manual

BEKO

Please read this manual first!

Dear Customers!

We hope that your product which has been manufactured in modern facilities and passed through strict quality control procedures will give you the best results.

For this, read through this manual carefully before using your product and keep it for future reference.

User manual will help you use the product in a fast and safe way.

- Read the user manual before installing and operating the product.
- Particularly follow the instructions related to safety.
- Keep the user manual within easy reach as you may also need it in the future.
- Also, please read all additional documents supplied with this appliance.

Please note that this user manual may be applicable for several other models. Differences between models will be identified clearly in the user manual.



This product has been produced in environmentally friendly, modern facilities.

It complies with EEE Directive.



CONTENTS

1 Safety Warnings	2
2 Technical Specifications of the Appliance	3
3 Using the Appliance	4
4 Cleaning and Care	11

1 Safety Warnings

- Please read the user manual before installing parts and operating the appliance.
- Your appliance is intended for only household use. It is not a professional appliance.
- Keep the appliance out of reach of children.
- Unplug the appliance during cleaning and when it is not in use.
- Cutter blade is very sharp. Hold it carefully from the plastic part while unpacking, during use, after use and while cleaning.
- When using the graters, always use pushers to feed in the foods to be grated; NEVER DO this by hand or by using any other tool.
- Before the first use, please read cleaning and care section of this user manual and clean your appliance.
- Do not operate you appliance's accessories when the appliance is empty or when there is no food in it.
- Your appliance is only compatible with the supplied accessories. Never use accessories of other appliances.
- Never put the processor and the measuring cups in a microwave oven.
- Do not operate your appliance for a long time, operate it with short intervals.
- **If power cable is damaged, it should be replaced by authorized service.**
- Your appliance must not be used by persons (including children) with reduced physical (aural or visual), sensory or mental capabilities, or lack of experience and knowledge, unless they have been given supervision by a

person responsible for their safety.

- Children must be supervised when they are using the appliance and they should not be allowed to tamper with it.

Caution!

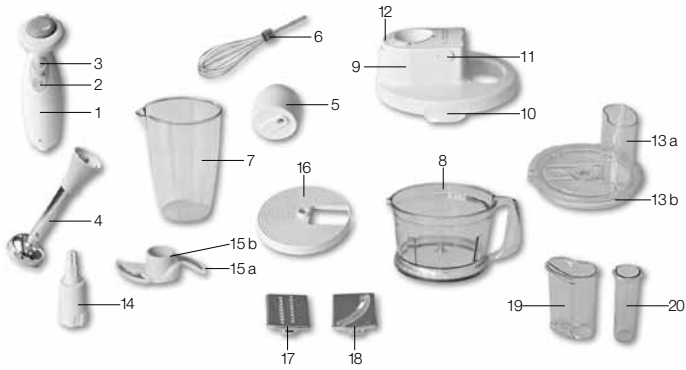
Before replacing the accessories or reaching the movable parts when the appliance is in use, you must remove your hand from the operating button of the appliance, wait for the motor to stop completely and unplug the appliance.

Read the user manual completely and thoroughly including warranty section before starting to use your appliance.

Please keep the original invoice or its photocopy for future reference regarding warranty issues.

This appliance is intended for domestic use.

2 Technical Specifications of the Appliance



- 1- Motor body
- 2- Turbo operation button
- 3- Operating switch
- 4- Metal blending shaft
- 5- Whisker operating cap
- 6- Whisker
- 7- Beaker
- 8- Processor container
- 9- Processor container's lockable cover
- 10- Locking tabs
- 11- Locking tab release buttons
- 12- Motor body locking button
- 13a- Middle cover
- 13b- Middle cover sealing
- 14- Accessory carrier pin
- 15a- Blade sheath
- 15b- Cutter blade
- 16- Grater carrier disc
- 17- Grating blade
- 18- Slicing blade
- 19- Large pusher
- 20- Small pusher

Voltage : 230V~ 50 Hz

Insulation class : 

Dimensions : \varnothing 205 x \varnothing 205
x 395 mm.

Power : 400 W max.

The capacity of processor's container : 1,500 ml. max.

Beaker capacity : 800 ml. max.

Net weight : 2318 g

- Markings on the appliance or the values stated in print documents supplied with the appliance are values obtained under laboratory conditions as per relevant standards. These values may vary according to the usage of the appliance and ambient conditions.

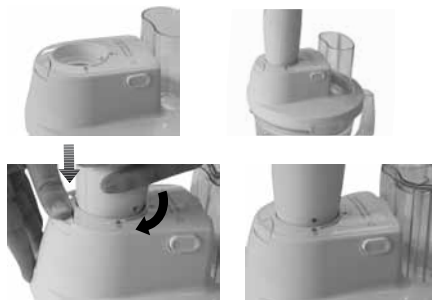
3 Using the Appliance

Chopping and Blending in the Processor Container with the Cutter Blade

- For your safety, your appliance will not operate unless the processor container cover is seated well in its place.

To attach the motor body:

1. Align the position marks “▼” on the body and “⬇️” on the cover to place it on the cover.
2. Rotate the motor body clockwise until a locking sound is heard. In this case, the “▼” position mark on the body will align with the “⬆️” position mark on the cover.



To detach the motor body:

1. Unplug the product.
2. Press and hold with one hand the “⬆️” locking button on the cover and rotate the motor body counterclockwise with the other hand to the “⬇️” position mark. Remove the motor body.
3. To detach the food processor’s cover, press the buttons indicated by arrows.



NEVER pull the locking tabs to open them; always use the release buttons.

Caution!

Read the “Maintenance and Cleaning” part before using your product and wash and dry carefully the detachable and washable parts with lukewarm soapy water. Never immerse the motor part in water. You can wipe and clean it with a slightly damp cloth.

When using your appliance, operate it shortly (running intermittently in short intervals) in “Turbo” position. Foods you wish to chop or blend will blend better and will be chopped to pieces at the same sizes.

WARNING: Your appliance is designed to operate continuously for maximum 10 seconds. Care should be paid not to exceed this time when preparing the foods. Otherwise, your appliance may be damaged. Wait for some 1 minute in every 10 seconds until the appliance cools down.

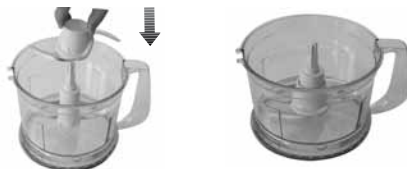
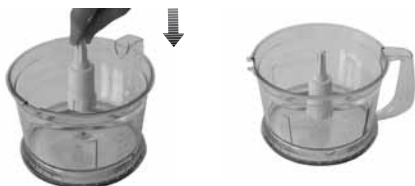
Turbo Button

Turbo button allows pulse operation and maximum power usage. With the turbo function, you can get especially the chopping result you wish easier.

Press the button in short intervals also when using the turbo function.

Please follow the order below for use.

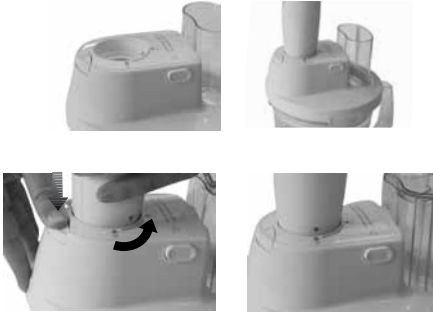
- Place the processor container on a flat and stable surface. Then, seat the accessory carrier pin on the centering pin in the processor container.
- Take the metal cutter blade out of its sheath and place it on the accessory carrier pin.
- Put the food you wish to chop in the container at equal height and as not to heap up at one side. Do not put more food than the recommended quantities; appliance may be damaged.



- Place the transparent middle cover on the processor's container. Place also the processor container's lockable cover carefully and lock the tabs. The "click" sound will indicate that the tabs are seated and locked.



- Align the position marks "▼" on the body and "⬇" on the cover to place it on the cover. Rotate the motor body clockwise until a locking sound is heard. In this case, the "▼" position mark on the body will align with the "⬇" position mark on the cover.



WARNING: Your appliance will not operate until the processor container's lockable cover and/or the motor body are fully seated and locked into their places.

- Plug in the appliance.
- You may start the chopping process by pressing the operation button or the turbo button on the motor body.
- The "TURBO" button allows pulse operation and maximum power usage. With the turbo function, you can both get especially the chopping result you wish easier and also you will extend the service life of the appliance.
- **Though the chopping and blending recommendations are the results of tests that have been carried out, you may also determine the ways and times of operation according to your own taste.**
- Seed the fruits such as peach, apricot, plum, etc. and shell the dried fruits and nuts such as almond, hazelnut, walnut, etc. before processing them in your appliance. Use the meat as boneless, fatless and without sinews.

Caution!

1- When operating your appliance, do not detach the motor body and the lockable cover from the food processor's container to control or finish the work unless the motor comes to a full stop and the appliance is disconnected.

2- First of all, remove the blade together with the accessory carrier pin carefully to get the foods you have chopped.

Chopping recommendations are given in the table on page 7.

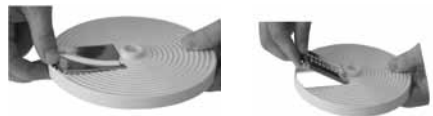
To remove the motor body, apply the steps explained on page 4.

FOOD TYPE	CAPACITY	OPERATION MODE
Meat	400 g	Turbo
Onion / Garlic (cut into pieces)	500 g	On-Turbo (for momentary operations)
Fruits (cut into pieces)	700 g	Turbo
Parsley	100 g	On-Turbo
Hazelnut / Almond / Walnut	300 g	On-Turbo
Cheese	300 g	Turbo
Biscuit	300 g	On-Turbo

Grating and Slicing in the Processor's Container

Please follow the order below for use.

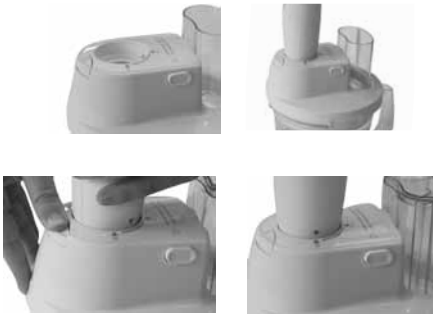
- Place the processor's container on a flat and stable surface. Then, seat the accessory carrier pin on the centering pin in the processor's container.
- For slicing or grating process, hold the carrier disc as the disc side pointing upwards, first place the projecting part of the grater or the slicing blade in its place and press the other side slightly. (To remove the grater and slicing blades from the disc, push slightly from bottom.) If the blade is at the same level with the surface of the disc and not moving when pressed down from top, it has seated in its place.



- Place the disc on the accessory carrier pin.
- Place the transparent middle cover on the processor container. Place also the processor container's lockable cover carefully and lock the tabs. The "click" sound will indicate that the tabs are seated and locked.



- Align the position marks “▼” on the body and “🔒” on the cover to place it on the cover. Rotate the motor body clockwise until a locking sound is heard. In this case, the “▼” position mark on the body will align with the “🔒” position mark on the cover.



WARNING: Your appliance will not operate until the processor container's lockable cover and/or the motor body are fully seated and locked into their places.

- Plug in the appliance.
- You may start the grating or slicing process by pressing the operation button on the motor body. Do not operate the appliance in turbo mode when performing grating or slicing processes.

• **To remove the motor body apply the steps explained on page 4.**

- For your safety, feed the food into the container with its pusher; pushers must be in their place when the appliance is operating. There are two types of pushers according to the thickness of the food: big and small. You may select the pusher according to the piece you will put. Never use your fingers, fork, spoon and tools alike instead of a pusher.



When grating process is over, it is recommended that the disc be operated as to rotate for several cycles more to grate the smaller items that might have remained between the carrier disc and the cover.

Grating and slicing recommendations are given in the table on page 9.

FOOD TYPE	CAPACITY	OPERATION MODE
Cucumber	800 g	On
Carrot	400 g	On
Potato	400 g	On
Courgette	800 g	On
Radish	400 g	On

Blending and chopping with the metal blending shaft:

Caution!

Please take the following into consideration before using, while using and after using the blending shaft; Operate the metal shaft in a container and only when there is food in the container. It is dangerous to operate it outside of container or with an empty container.

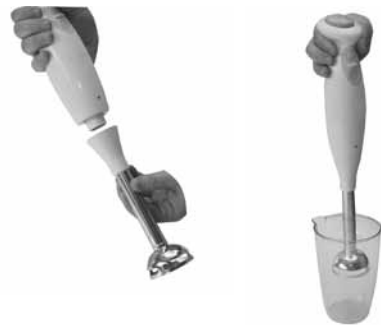
Please follow the order below for use.

Before plugging in the appliance, fix the metal blending shaft to the motor body by turning it towards the direction of arrow.

Stop turning when the metal blending shaft's upper edge is fixed to the motor body; if you tighten more, this may cause abrasion in screw threads. To get better results with metal blending shaft, please use the supplied beaker or a deep bowl.

Cut the food into pieces before placing them in the beaker. Dip the metal blending shaft into the beaker, plug and operate the appliance. Do not operate your appliance for a long time, operate it with short intervals. When operating, you may move the

metal shaft upwards and downwards to ensure better blending. When you finish blending, unplug the appliance and remove the metal shaft from the main body.



Whisking and blending with the whisker:

You can easily prepare cake, omelets, pancake and mayonnaise with the help of whisker operating cap and the whisker.

Please take the following into consideration before using, while using and after using the whisker;

- Always operate the appliance in upright position.
- Do not operate the appliance in an empty bowl or outside the bowl.
- To ensure an efficient whisking, move the whisker up and down and in

circular motions.

- Make sure that the whisker is completely fixed in place.

Please follow the order below for use;

First insert the whisker into the whisker operating cap by pushing it and make sure that it is securely fastened.

Screw the whisker operating cap on the main body; do not tighten too much to avoid abrasion in screw threads.

Dip the whisker into the supplied beaker or a deep bowl containing the food, plug the appliance and complete the whisking.

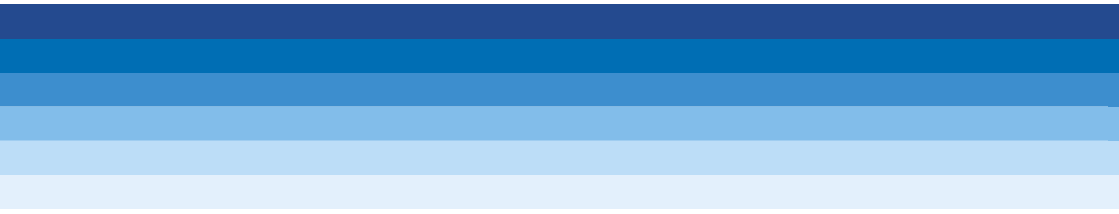
When you are done, stop and unplug the appliance. Take the main body out of the beaker. Unscrew the whisker by turning towards opposite direction to remove it from the operating cap. Pull out the whisker.

- **It is recommended that the whisker be used together with the supplied beaker or with a deep container.**



4 Cleaning and Care

- Always unplug the appliance before cleaning.
- For easy cleaning, it is recommended to wash and dry the accessories immediately after use.
- Particularly, wash and dry the cutter blade immediately after the use.
- Do not immerse motor body, processor container's lockable cover and whisker operating cap into water and do not wash them under running water or dishwasher. Wipe them with a lukewarm damp cloth (recommended washing up liquids might be used) and dry.
- You may wash the beaker, processor container, transparent middle cover, pushers, whisker, blade and the grating blades on the upper rack of a dishwasher.
- You may wash metal blending shaft in lukewarm detergent water or wipe it with a damp cloth. However, you have to avoid water getting into the inner part of blending shaft. In such a case, turn the shaft upside down and shake and dry it up; do not wash the shaft in dishwasher.
- Be careful when washing stainless blades, grater and slicing blades. These parts are sharp. Keep the metal blade in its protective plastic sheath when not in use.
- You may remove the sealing on the transparent middle cover and reattach it after cleaning and drying.



www.beko.com

48 9049 0000/AF
EN-FR-DE-EL