



WAT Motor  
Sanayi ve Ticaret A.Ş.



### Three Phase Squirrel Cage Induction Motor

Motor type Q3H180L4B40

#### Electrical Data

RATED VALUES						STARTING VALUES				BREAKDOWN	EFFICIENCY			EFFICIENCY CLASS		
VOLTAGE	POWER		SPEED	CURRENT	TORQUE	Cos φ	CURRENT		TORQUE		TORQUE	%			IEC 60034-30-1	
	V	kW	Hz	rpm	A	Nm	4/4	Y	D	Y	D	Mk/ Mn	Nm	4/4		3/4
400/690	22	50	1485	41,6/24,0	141,70	0,83	3,1	9,213	0,9	2,78	3,6	IE3-93,0%	93,1	92,3		IE3
460/795	25,3	60	1755	39,3/22,7	137,66	0,86	3,0	8,936	0,9	2,64	3,5	-	-	-		

#### Mechanical Data

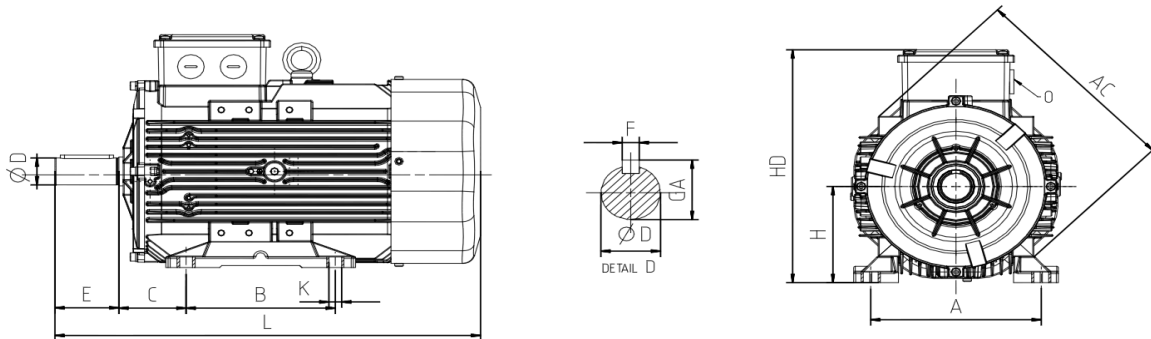
Bearing DE	6310-ZZ	Color	RAL 6011
Bearing NDE	6310-ZZ	Motor protection	PTC
Lubricants	Shell Gadus S5 V220-2	Method of cooling	IC 411
Condensation drain hole	No	Terminal box position	Top
External earthing terminal	Yes	Material of terminal box	Aluminium
Vibration class	A	Terminal plate thread	M8
Insulation Class	F	Cable gland	1xM40
Duty type	S1	Clamping range	22-32 mm
Direction of rotation	Clockwise	Mounting type	IM 1001 (B3)
Housing material	Aluminium		
Type of balancing	Half Key		

#### Environmental Data

#### Others

Ambient Temperature	-20 / + 40 °C	Type of protection	IP 55
Altitude above sea level	1000 m	Sound Pressure Level 50/60Hz dBA	68
		Moment of Inertia (kg.mm <sup>2</sup> )	0,18659785
		Standard	IEC 60034-1
		Weigth (Kg)	158

#### Dimensions



Main Dimensions		Foot Mounted Motors						Shaft				Flange Mounted Motors			
AC	L	B	A	H	HD	K	C	D	E	GA	F	P	N	M	R
348,5	696	241-279	279	180	437	14,5	121	48	110	51,5	14	-	-	-	-